

# A Trained Healthcare Workforce Starts Here

The purpose of the High Sierra AHEC program is to meet the needs of the communities we serve through robust community-academic partnerships, with a focus on recruiting, developing and cultivating our healthcare workforce pipeline. Through a variety of valuable partnerships we develop future leaders in healthcare.



## Community Partners

Department of Health and Human Services  
Education Alliance  
Immunize Nevada  
Nevada Hospital Association  
Nevada Primary Care Association  
Nevada Rural Hospital Partners  
Project ECHO  
Regional/ Statewide Hospitals  
Truckee Meadows Community College  
University of Nevada, Reno  
University of Nevada, Reno School of Medicine  
Western Nevada College

## Nevada AHEC Scholars Cohort:

**22** Medical Doctors

**5** Physician Assistant

**1** Psychiatry

**3** Psychology

**13** Nursing

**1** Social Work

**4** Counseling

**8** Public Health

**1** Physical Therapist



## AHEC Scholars Core Competencies



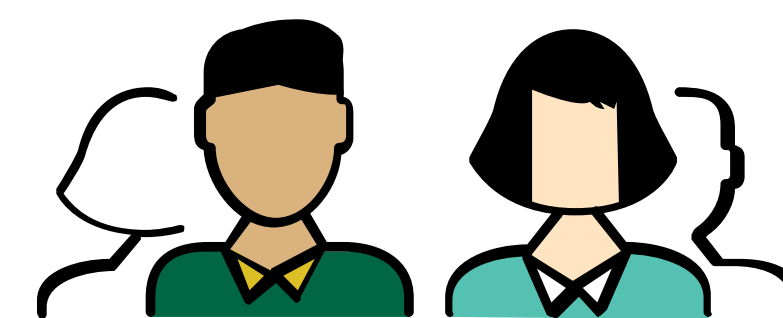
**Interprofessional Education** supports a value-based, patient-centered model that requires a coordinated and collaborative team of healthcare providers.

**Behavioral Health Integration** promotes the development of integrated primary and behavioral health services to better address the needs of individuals with mental health and substance use conditions.



**Cultural Competency** seeks to improve individual health outcomes and quality of care by training health care providers to recognize and meet the unique social, cultural, linguistic, and health literacy needs of diverse consumers and communities.

**Practice Transformation** aims to fully support quality improvement and patient centered care through goal setting, leadership, practice facilitation, workflow changes, measuring outcomes, and processes to support new team-based models of healthcare delivery.



**Social Determinants of Health** includes areas of economic stability, education, social and community context, health and healthcare, and neighborhoods and built environments impact on health.

**Current/Emergent Health Issues** provides forward thinking learning opportunities to address localized issues such as HPV, suicide prevention, opioid epidemic, and physician burnout, etc.



## By The Numbers ...

57

Active Nevada AHEC Scholars

235

Training hours completed

15

Experiential preceptor sites

20%

Scholars representing rural communities

9% of active High Sierra AHEC Scholars represent our healthcare workforce pipeline.

## Nevada AHEC Scholar Specialist Paid Experiential Opportunity

**DHHS**



The Department of Health and Human Services has partnered with the Nevada AHEC Scholars Program to provide 5 Scholars a paid opportunity to complete experiential hours within selected organizations and host agencies during FY 2019 - 2020.

**Does your organization have recruitment needs? Connect with us!**

Connecting Students to Careers, Professionals to Communities, and Communities to Better Health