

# Leveraging Advanced Analytics to Support the Long-Term Impact of COVID-19

Comagine Health is poised to provide needed insight to primary care providers, hospitals, clinics, payers and other stakeholders who will be significantly impacted by of the long-term effects of the COVID-19 pandemic. While systems are currently engaged to respond to patients with COVID-19 (primary impact), Comagine Health is actively preparing to offer advanced analytics to evaluate the broader impact of COVID-19. To learn more about our efforts, visit our [COVID-19 analytics site](#) and sign up for our weekly [COVID-19 updates](#).

## Available Data Sources

Comagine Health’s access and expertise in historical and administrative claims data can be used to uncover key insights.

Primary Sources	Potential Additional Sources
<ul style="list-style-type: none"> <li>• Medicare FFS claims data (ID, NV, NM, OR, UT and WA)</li> <li>• Oregon all payer all claims data covering 80% of Oregon, including commercial, Medicaid, Medicare Advantage and Medicare FFS</li> </ul>	<ul style="list-style-type: none"> <li>• Utah all payer claims data</li> <li>• UT and OR vital statistics (death certificate data). Note this data requires specific data use agreements (DUAs) and will lag.</li> <li>• Public data (e.g. census, <a href="#">policy dates</a>, incident reporting)</li> </ul>

## How can we share our Analytics?

Comagine Health is prepared to create and share analytics in several ways.

### Public Content

Comagine Health can pull our key analyses into small Data Bytes as well as Interactive Analyses onto our Website to help inform public stakeholders of important trends & findings

### Academic Research

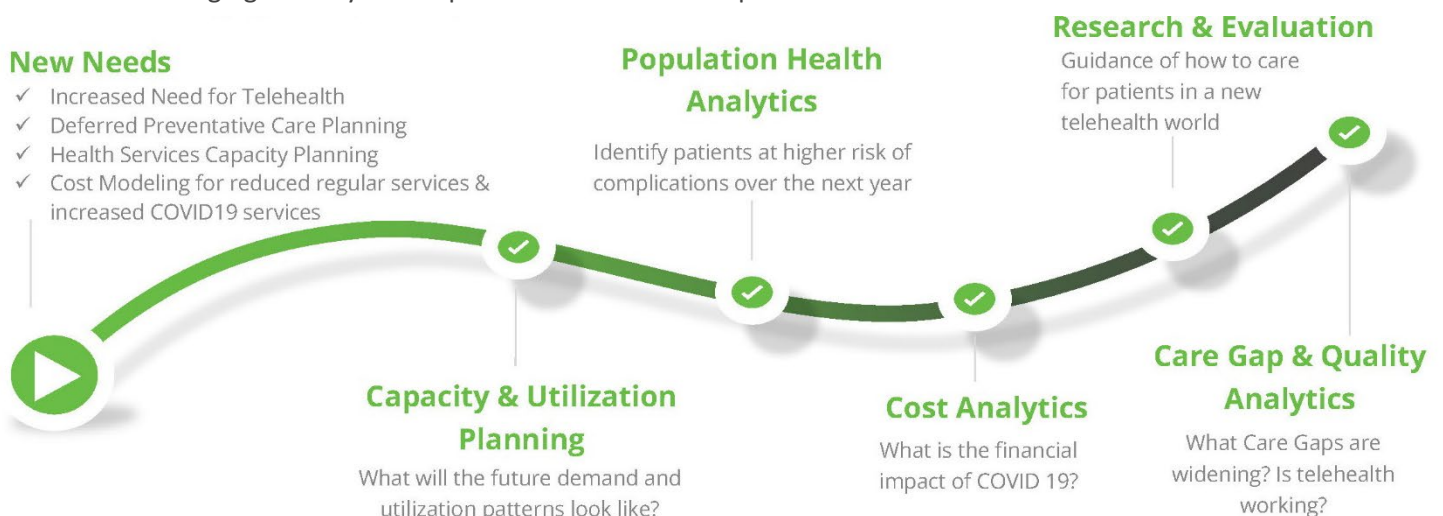
Comagine Health can produce new Academic Research and/or supplemental add-ons to current projects

### Provider Centered Analytics

Comagine Health can build out direct custom analytics and deliver custom content through our Data for Change Analytic Platform

## Our Roadmap for Analysis

COVID-19 is changing the way care is provided & what care is provided.



## Initial Populations & Areas of Interest

As we look into the data, we will be reviewing the populations and areas of care.

Social determinants of health (SDOH)	Comorbidities (CM) <i>Including, but not limited to</i>	Telehealth (TH)	Maternity (M)	Preventative Care (PC)
<ul style="list-style-type: none"> <li>• Race/ethnicity/language</li> <li>• Insurance coverage &amp; changes</li> <li>• State policies Changes</li> <li>• Employment status: “essential” workers</li> <li>• Housing status &amp; Rurality</li> <li>• Incarcerated status</li> <li>• Prevalence of domestic violence</li> </ul>	<ul style="list-style-type: none"> <li>• Mental health diagnoses</li> <li>• Substance use disorder</li> <li>• Cancer</li> <li>• Heart disease &amp; Hypertension</li> <li>• Diabetes &amp; Kidney Disease</li> <li>• Chronic obstructive pulmonary disease (COPD)</li> </ul>	<ul style="list-style-type: none"> <li>• Provider distance from patient</li> <li>• Utilization</li> <li>• Use of home and remote monitoring devices</li> </ul>	<ul style="list-style-type: none"> <li>• Prenatal care</li> <li>• Postpartum care</li> </ul>	<ul style="list-style-type: none"> <li>• Pediatric immunization schedules</li> <li>• Cancer screenings</li> <li>• Chronic Care Management</li> </ul>

## Initial Research Questions

The following list are questions Comagine Health is preparing to address the potential challenges ahead. The columns indicate if the question could be focused or tailored to the stated topics.

Potential Research question	SDOH	CM	TH	M	PC
<b>Capacity &amp; Utilization Planning</b>					
How do we plan for new waves of COVID19 infections and predict utilization patterns so hospitals and clinics can prepare the right amount of capacity?	✓	✓			
After the initial COVID19 wave of acute infections, what services will need to be ready to care for non-COVID chronic patients, including behavioral health, and substance use support?	✓	✓	✓		
How has the use of telehealth changed as a result of the pandemic?		✓	✓		✓
<b>Population Health Analytics</b>					
What conditions and circumstances influence the risk of hospitalization, ICU stays, or death related to COVID-19 infection?	✓	✓			
Who does “flattening the curve” protect the most? How did the rate of increase in infections at the beginning of the pandemic influence the mortality of different populations?	✓	✓			
How are pre-existing conditions exacerbated by isolation and physical distancing policies, especially mental health diagnoses and substance use disorders?	✓	✓		✓	
<b>Cost Analytics</b>					
What is the long-term financial impact of fewer face to face encounters for primary care clinics?		✓			✓
How is the intensity of services impacted by the COVID-19 pandemic?		✓	✓		✓
<b>Research &amp; Evaluation</b>					
What is the impact of later-stage diagnoses of cancer and heart disease?	✓	✓			✓
How has the COVID19 pandemic affected patients with substance disorders including changes in treatment approach, recovery support and harm reduction tools?	✓	✓			
<b>Care Gap &amp; Quality Analytics</b>					
What is the quality impact of deferred or late care on patients with chronic conditions?		✓		✓	✓
What are the impacts of delayed or skipped immunizations and well child checks in the pediatric population?					✓
How does the disruption in access influence outcomes for patients with currently undiagnosed illnesses (diagnoses would occur later in disease course)?		✓			✓
How does rising unemployment and resulting changes in insurance status (commercial to Medicaid or uninsured) impact outcomes?	✓	✓	✓	✓	✓

**Questions?** Contact Meghan Haggard: [mhaggard@comagine.org](mailto:mhaggard@comagine.org) or 503-972-0866